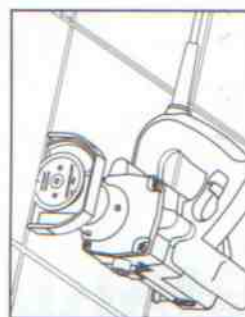


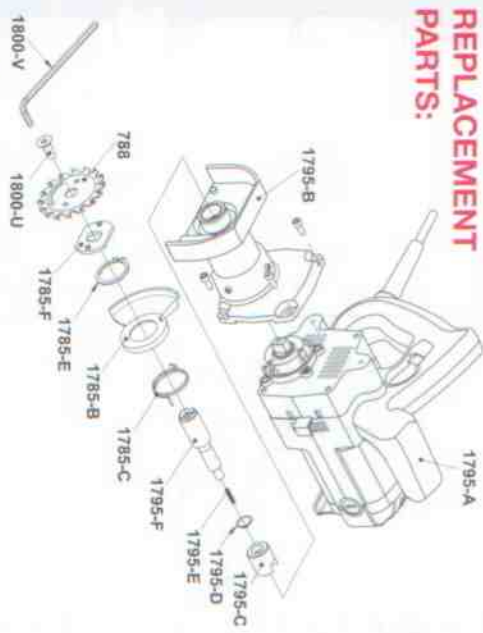
DIAMOND BLADE

A diamond blade is available as an accessory. It's used to saw out tile under toe spaces or on counters. Also, for tile repair, it can be used to remove field tiles.



Caution: Do not overheat this blade! Cut 6ft. maximum and allow cooling. Avoid cutting into wood subfloors as this gums up the diamond grit. For best results, shim up the saw to approximate tile thickness. Make sure no chicken wire or expanded metal has been installed under tiles to be cut.

REPLACEMENT PARTS:



Order No.	Description
1795-A	120V Power Unit Type 2
1795-B	Housing Complete (Includes P/N's 1795-C, D,E,F)
1795-C	Spindle Driver
1795-D	Spindle Retainer Ring
1795-E	Spindle Coupling Screw
1795-F	Spindle
1795-G	Carrying Case (not shown)
1795-H	Brush Set (not shown)
1795-I	Power Cord (not shown)
1795-J	Switch (not shown)
1795-K	Carrying Case Latch Set (2) (not shown)
1795-L	Spindle w/Gear (not shown)
1795-M	Armature w/Fan (not shown)
1795-N	Blade Guard
1795-O	Blade Guard Spring
1795-P	Blade Guard Retainer Ring
1795-Q	Blade Guard Retainer Ring
1795-R	Blade Driver
1795-S	Socket Set Screw
1795-T	Allen® Wrench
1800-V*	(*) Common to #785 Saw

DUST HAZARD WARNING:

Some dust created by power sanding, sawing, grinding, drilling, and other construction activities contains chemicals known to the State of California to cause cancer, birth

defects or other reproductive harm. Some examples of these chemicals are:

- Lead from lead-based paints,
 - Crystalline silica from brick, cement and other masonry product, and
 - Arsenic and chromium from chemically-treated lumber.
- Your risk from these exposures varies, depending on how often you do this type of work. To reduce your exposure to these chemicals: work in a well-ventilated area, and work with approved safety equipment, such as those dust masks that are specially designed to filter out microscopic particles.

SAW SPECIFICATIONS:

ELECTRICAL: 120 VAC, 11 AMPS, 60 HZ Double Insulated
2 1/2 HP Motor, No Load Speed 4500 RPM

REP. BLADE: #787 or 788 Carbide, #789 Diamond

GROSS WT: 11.8 LBS.

MIN./MAX. DIMS. FOR TOE-KICK TO BE CUT:

- Ⓐ MIN. HEIGHT: 3 1/2" Ⓑ MAX. DEPTH: 4"
- Ⓒ MAX. FLOOR THICKNESS: 3/4" - No. 787 Blade
- MIN. FLOOR THICKNESS: 1/2" - No. 788 Blade



GUARANTEE

This Crain tool is guaranteed to be free of defects due to faulty materials or workmanship for a period of 6 months.

During this period, any parts of tools found defective subject to the guarantee will be replaced at no charge. Returns should be sent freight PREPAID, in assembled condition and with a copy of the Bill of Sale (proof of purchase) to **CRAIN CUTTER COMPANY**, 1155 Wrigley Way, Milpitas, CA 95035. New tools or loaners will not be given for those pending warranty repairs.

No claims shall exceed in amount the suggested sales price of the product. No other guarantee, oral or written, is expressed or implied.

DATE OF MFG.

JAN 2007

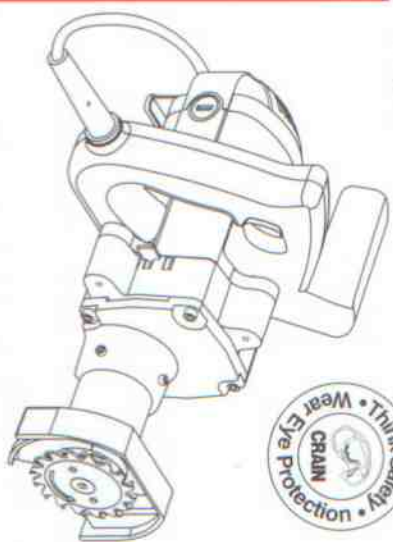
CRAIN CUTTER CO., INC.

1155 WRIGLEY WAY, MILPITAS, CA 95035-5426
TEL: 408-946-6100 FAX: 408-946-4268

Printed by: HW 3M

FORM F1795-Rev.05/06

INSTRUCTION MANUAL FOR



CRAIN

No. 795 TOE-KICK SAW

⚠ WARNINGS:

KICKBACK HAZARDS:

- CUT SLOWLY. KEEP MOTOR RPMs HIGH AT ALL TIMES.
- GRIP FIRMLY WITH BOTH HANDS AT ALL TIMES.
- FOR USE UNDER TOE SPACES ONLY.
- CUT IN FORWARD DIRECTION ONLY.
- CUT STRAIGHT ONLY.
- DON'T REMOVE FROM THE CUT UNTIL THE BLADE STOPS.
- USE NEW SHARP BLADES.

DUST HAZARDS

Some dust created by using power tools contain chemicals known to the State of California to cause cancer and birth defects and other reproductive harm.

IMPORTANT SAFETY INSTRUCTIONS

SAFETY GLASSES AND DUST MASK:

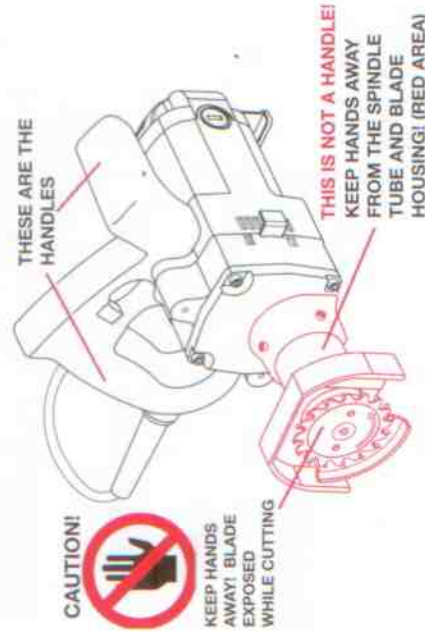
Always wear safety glasses when using this saw. Also use face or dust mask if cutting operation is dusty.

KICKBACK DANGERS AND BLADE MAINTENANCE:

- CUT SLOWLY. KEEP MOTOR RPMs HIGH AT ALL TIMES.
- GRIP FIRMLY WITH BOTH HANDS AT ALL TIMES.
- USE THIS SAW FOR CUTTING UNDER TOE SPACES ONLY. NOT FOR USE IN GENERAL SAWING. CUTTING SHEETS OF LOOSE PLYWOOD CAN BIND THE BLADE AND CAUSE SEVERE KICKBACK.
- CUT IN FORWARD DIRECTION ONLY.
- CUT STRAIGHT ONLY.
- DO NOT REMOVE THE SAW FROM THE CUT UNTIL THE BLADE STOPS.
- USE NEW SHARP BLADES AT ALL TIMES.

BLADE GUARD:

The blade guard attached to your saw is for your safety and protection. If it becomes damaged, do not operate your saw until it has been repaired. Always leave blade guard in operating position when using the saw. KEEP HANDS AWAY FROM THE SPINDLE TUBE AND BLADE HOUSING (RED AREA). THIS IS NOT A HANDLE!



DANGEROUS ENVIRONMENTS:

Keep work area clean; clutter invites accidents. Do not use on damp or wet floors. Be sure lighting is good.

ACCIDENTAL STARTING:

To avoid accidental starting, do not carry saw with fingers on switch.

CORD ABUSE AND EXTENSION CORDS:

Never carry saw by the cord or yank the cord to disconnect from an outlet. Keep cords away from heat, oil, and sharp edges.

Avoid using long extension cords, as they will cause some loss of power. To keep the loss to a minimum and prevent saw from overheating, use a heavy-duty extension cord with these minimum wire sizes:

- 25' = 16 gauge wire
- 50' = 14 gauge wire

DOUBLE-INSULATED:

This saw is constructed with two separate layers of electrical insulation. A saw built with this insulation system does not need to be grounded. As a result, this saw is equipped with a two-prong plug without a ground pole.

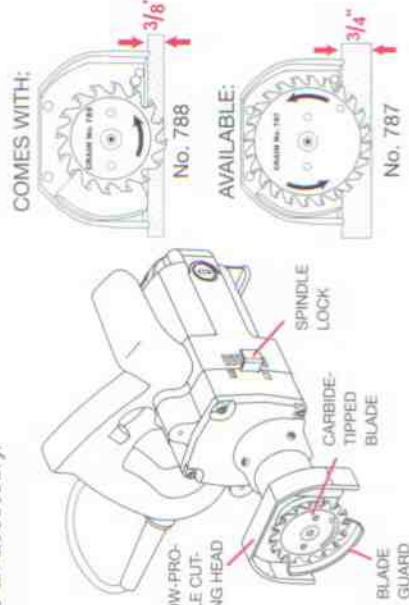
FEATURES OF THE SAW:

This saw is designed for removal of floors or underlayment under toe-spaces. It does the job whenever a flush cut at the wall is necessary. Please take time to notice the following features.

LOW-PROFILE CUTTING HEAD: Will fit under toe-kicks as low as 3" in height.

SPINDLE LOCK: For blade changes, the spindle lock stops the blade rotation, so that the blade can be easily removed. This is **NOT** to be used as a motor brake!

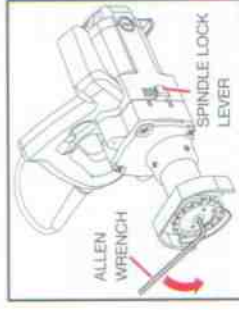
BLADES AND DEPTH OF CUT: The saw comes with a 2 3/4" dia. carbide-tipped blade (No. 788) for cutting underlays up to 3/8" thick. A larger 3 3/8" dia. blade, (No. 787) which cuts up to 3/4" thick underlayment, is available as an accessory.



NOTE: Always select the proper blade for the underlayment that you are sawing. A blade that cuts too deep can damage the subfloor!

BLADE CHANGING:

Unplug the saw. Push and hold the spindle lock to stop blade rotation. While holding the spindle lock lever, insert the 3/16" hex wrench (provided) into the blade's socket set screw and turn it counter-clockwise to loosen. Note: For extra leverage, insert an extension tube onto the hex wrench. Replace with new blade and retighten the screw firmly before use. Make sure spindle lock is pulled out before turning saw on.



OPERATING:

To avoid accidental starting, **DISCONNECT THE SAW FROM POWER SOURCE** before inserting the cutting head into the toe-space (see Figure 1).

Plug-in the saw. Grasp the handles firmly and pull the trigger. Press down on the handles to plunge the blade into the cut. Slowly push the saw forward and along the toe-kick (see Figure 2).

Do not force the saw; let the blade cut at the highest RPM possible.

As you complete the cut, release the trigger and make sure the motor comes to a full stop before removing the saw from the toe-space.

The Toe-Kick Saw may also be used to enlarge the expansion gap around the perimeter of a laminate plank floor (see Figure 3).

MAINTENANCE:

If the saw is dropped, the blade guard may be bent, restricting the full return of the blade guard. With the cord unplugged, check operation of the blade guard before each use. Make sure that saw dust does not impede the blade guard. Clean frequently.

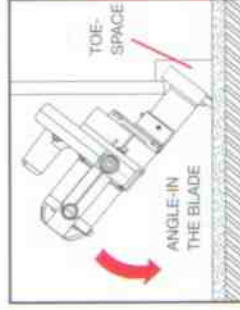


FIGURE 1

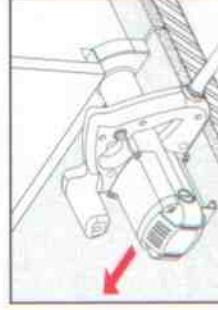


FIGURE 2

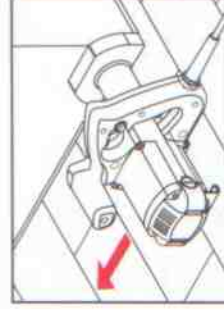


FIGURE 3